

टेलीफोन/Telephone: +91129-2411112

फैक्स/Fax +91129- 2412125

इमेल/E-mail: locust@nic.in



पत्र सं./ F.No.3-1/2017-/टिडडी/Locust

भारत सरकार/ Government of India

कृषि, एवं किसान कल्याण मंत्रालय Ministry of Agriculture and Farmers Welfare

कृषि, सहकारिता एवं किसान कल्याण विभाग/ Department of Agriculture Cooperation and Farmers Welfare

वनस्पति संरक्षण, संगरोध एवं संग्रह निदेशालय

DIRECTORATE OF PLANT PROTECTION, QUARANTINE & STORAGE

एन.एच. 4, फरीदाबाद(हरियाणा) – 121001/N H-IV, Faridabad (Haryana)-121 001

पाक्षिक टिडडी स्थिति बुलेटिन/ Fortnightly Locust Situation Bulletin

Vol. 69 सं./No. 15

अवधि/Period 01-15 August, 2017

1. सार/SUMMARY: India continued to be free from gregarious desert locust activity during the 1st fortnight of August 2017. However, isolated solitary mature adults with density of 5 locusts/ha was observed at AGNEU (28°07'20"N -72°44'01"E) locality of Bikaner district. As per eLocust3 data total 168 spots were achieved (shown in map with “N” means survey undertaken -no locust found and “L” means solitary locust adult observed) in distant and cross country surveys in the Scheduled Desert Areas (SDA) of Rajasthan and Gujarat during the period under report.

2. मौसम की परिस्थितिकी/WEATHER AND ECOLOGY: As per rainfall estimation map for 1st decade of August 2017, moderate rainfall was observed at Churu district of Rajasthan and light rainfall was observed at Suratgarh, Nagaur, Bikaner areas adjoining to Churu and eastern part of Jodhpur. The soil of scheduled desert areas except Suratgarh and some part of Nagaur and Phalodi is wet. As per locust survey data vegetation is green in almost all the parts of SDA. The area covered with green vegetation and wet soil is favourable for the locust breeding in remote areas. The maps showing rainfall estimation for 1st decade of August 2017 with locust situation, the data of soil moisture and green vegetation status observed by surveyors during the surveys in 1st fortnight of August 2017 are also shown in the enclosed maps.

3. टिडडी की स्थिति/LOCUST SITUATION:

1. Desert Locust (*Schistocerca gregaria*. F)

i) Swarm movement	Nil
ii) Breeding	Nil
iii) Hoppers	Nil
iv) Scattered/ Isolated Adults	05 locusts/ha.

4. पूर्वानुमान/ FORECAST: Due to heavy to moderate rainfall in SDA during July and availability of green vegetation in remote areas, there may be possibility of presence of locust activity. As per survey results the vegetation is green/ greenness and soil moisture is wet and due to both favourable ecological condition, small scale breeding is likely to be occurred.

5. तैयारी /PREPAREDNESS: India is equipped with sufficient working eLocust3 units for locust surveys/population monitoring, trained man-power, operational vehicles, well maintained plant protection equipments and pesticides for control operation in case of any locust incursion/upsurge. Keeping in view of favourable ecological condition special border survey was conducted and will be continue for next few months.

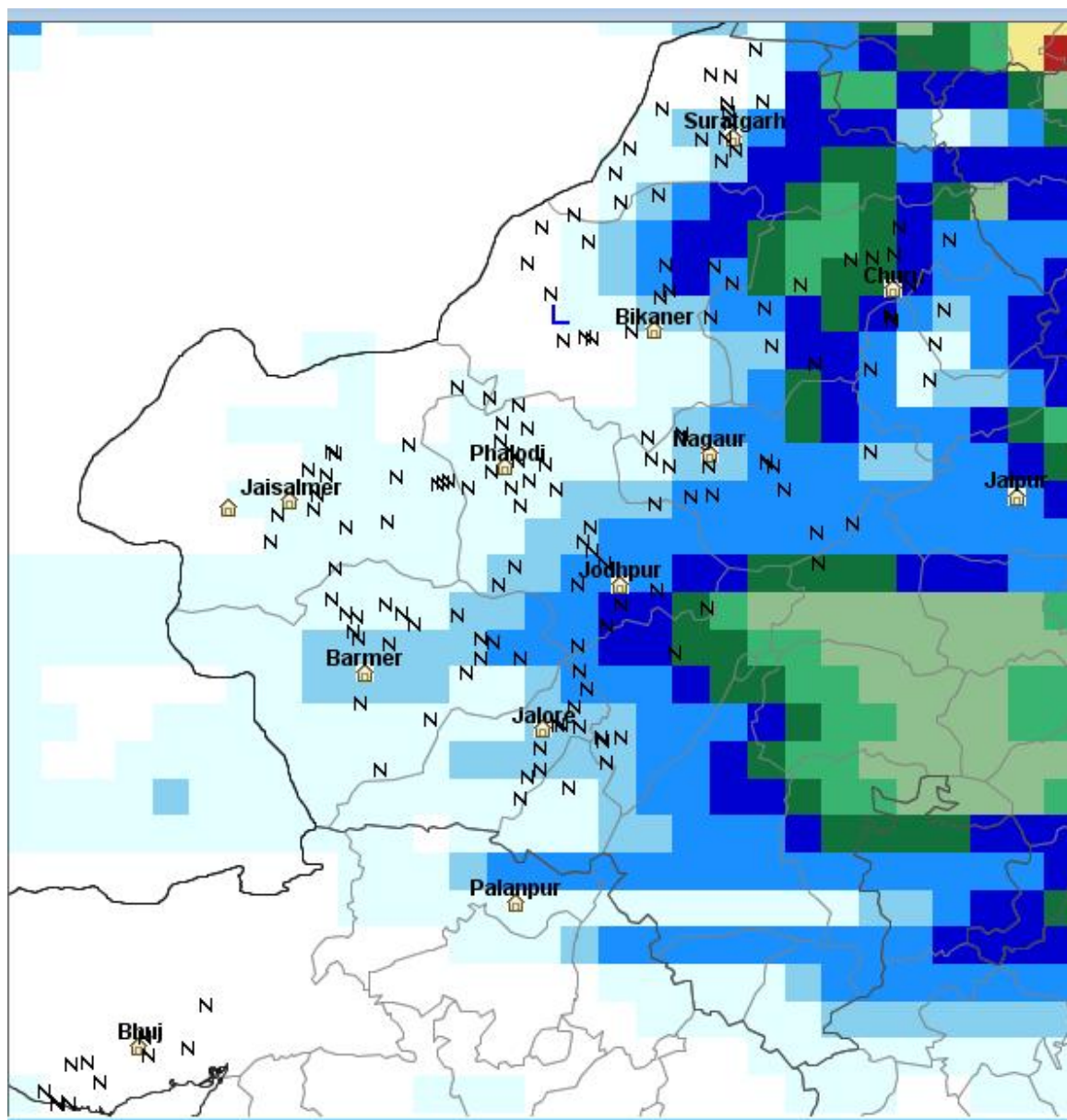
6. संबंध/CONTACTS: During field survey, the teams interacted with the villagers, farmers, nomads, NGOs and state government functionaries to make them aware about locust prevailing activities and advised to inform the nearest LCO or any other government agencies, if any locust development in their areas is observed.

(Dr. B. S. Phogat)

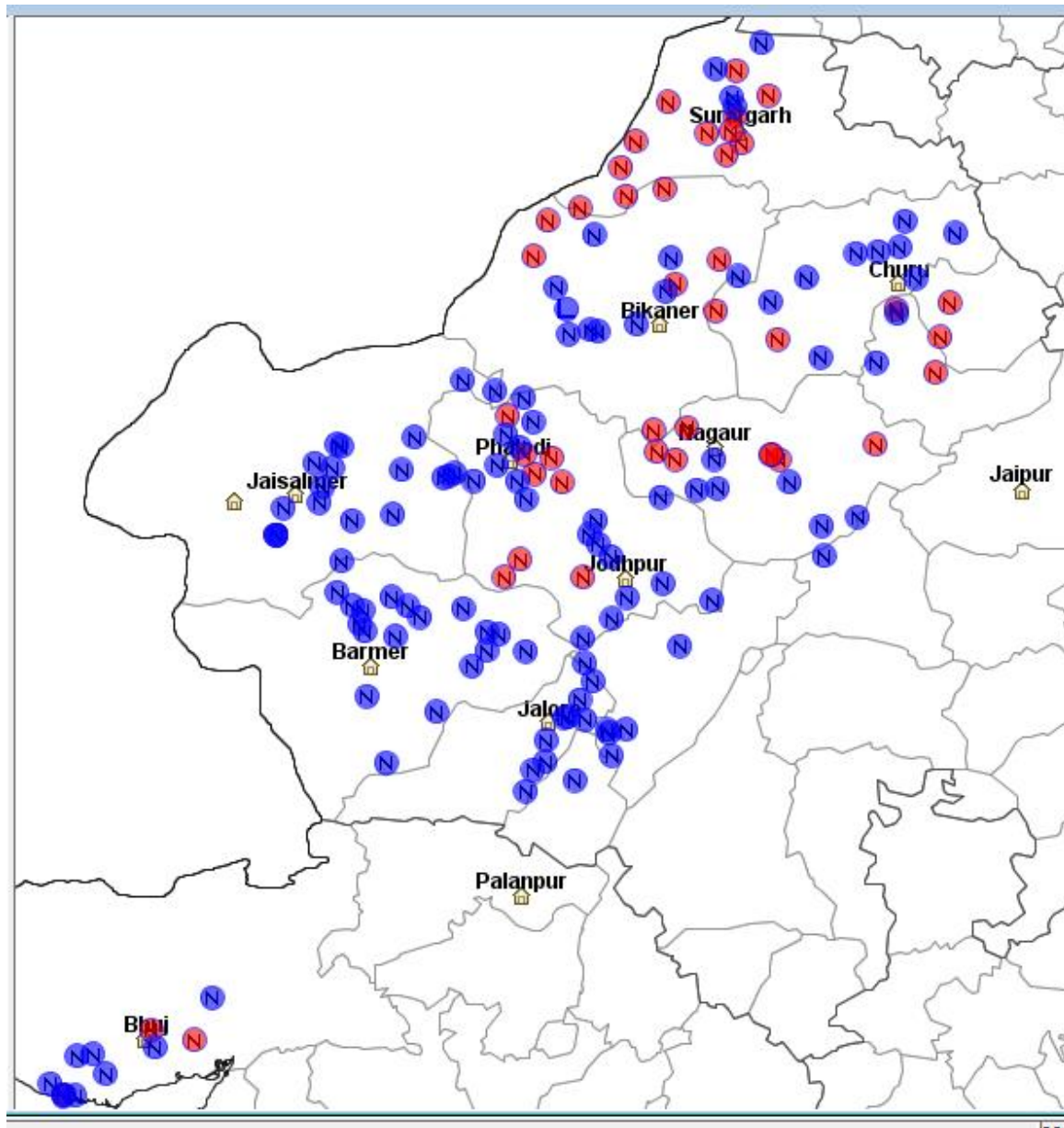
Add. Plant Protection Adviser

Map showing rainfall estimation for 01-10 August 2017 and Locust situation for 01 to 15 August 2017

Moderate rainfall observed at Churu area. Light rainfall observed at some part of Suratgarh, Nagaur Bikaner (adjoining to Churu). The Place in map mark with “L” shows the presence of locust population and mark with “N” shows the surveys were undertaken and no locust found.



Soil moisture during 1st fortnight of August 2017 recorded by surveyor at the places where surveys were undertaken. The soil is wet in most of the places and soil is dry at Suratgarh and some part of Nagaur area.



Green vegetation observed by the surveyors during locust surveys in the 1st fortnight of August 2017

