



E-mail: [locust@nic.in](mailto:locust@nic.in)

भारत सरकार/ Government of India

कृषि, एवं किसान कल्याण मंत्रालय Ministry of Agriculture and Farmers Welfare

कृषि, सहकारिता एवं किसान कल्याण विभाग/ Department of Agriculture Cooperation and Farmers Welfare

वनस्पति संरक्षण, संगरोध एवं संग्रह निदेशालय

**DIRECTORATE OF PLANT PROTECTION, QUARANTINE & STORAGE**

एन.एच. 4, फरीदाबाद(हरियाणा) – 121001/N H-IV, Faridabad (Haryana)-121 001

**पाक्षिक टिड्डी स्थिति बुलेटिन/ Fortnightly Locust Situation Bulletin**

Vol. 70 सं./No. 01

अवधि/Period 01 – 15 January, 2018

**सार/SUMMARY:** India continued to be free from solitary and gregarious desert locust activity during the 1<sup>st</sup> fortnight of January 2018. As per available record 84 spots were surveyed (shown in map with “N” means survey undertaken and no locust found) in cross country surveys in the Scheduled Desert Areas (SDA) of Rajasthan and Gujarat during the period under report.

**2. मौसम की पारिस्थितिकी/WEATHER AND ECOLOGY:** As per rainfall estimation map and survey data of 1<sup>st</sup> decade of January 2018, no rainfall was observed at scheduled desert areas of Rajasthan and Gujarat, the vegetation is green in Barmer, Jodhpur, Suratgarh and Jalore area, where as in rest areas of schedule desert is dry. As per green vegetation status map for the period from 01/01 to 10/01 (1<sup>st</sup> decade), the vegetation at Suratgarh, Bikaner, Jodhpur (Near Phalodi), Jaisalmer (adjoining to Canal) and Churu areas is 1-3 decade old and vegetation in rest areas of SDA is dry. As per observation of the surveyors, the soil moisture is dry. Green vegetation status for 1<sup>st</sup> decade of January, locust situation of 1<sup>st</sup> fortnight of January and the survey data of green vegetation status observed by surveyors during the surveys in 1<sup>st</sup> fortnight of January 2018 are shown in the attached. maps.

### **3. टिड्डी की स्थिति/LOCUST SITUATION:**

1. Desert Locust (*Schistocerca gregaria*. F)

i) Swarm movement	Nil
ii) Breeding	Nil
iii) Hoppers	Nil
iv) Scattered/ Isolated Adult	Nil

4. पूर्वानुमान/ FORECAST: The reduction in availability of green vegetation in remote areas, observance of nil solitary adult locust during the month and the end of breeding period (winter season) there is very less possibility of presence of locust population.

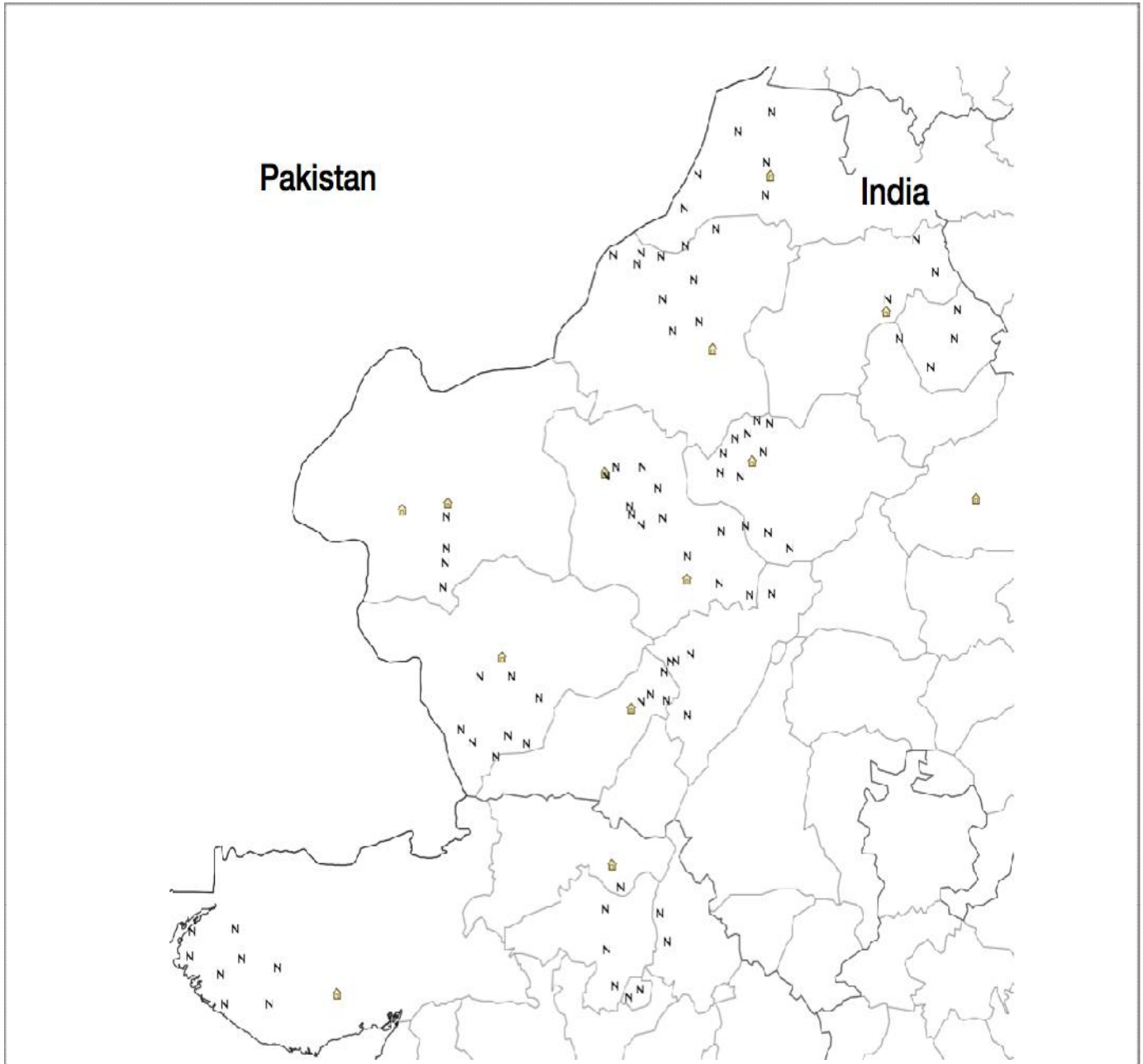
5. तैयारी /PREPAREDNESS: India is equipped with sufficient working eLocust3 units for locust surveys/population monitoring, trained man-power, operational vehicles, well maintained plant protection equipments and pesticides for control operation in case of any locust incursion/outbreak/upsurge.

6. संबंध/CONTACTS: During field survey, the teams interacted with the villagers, farmers, nomads, NGOs and state government functionaries to make them aware about locust prevailing activities and advised to inform the nearest LCO or any other government agencies, if any locust development in their areas is observed.

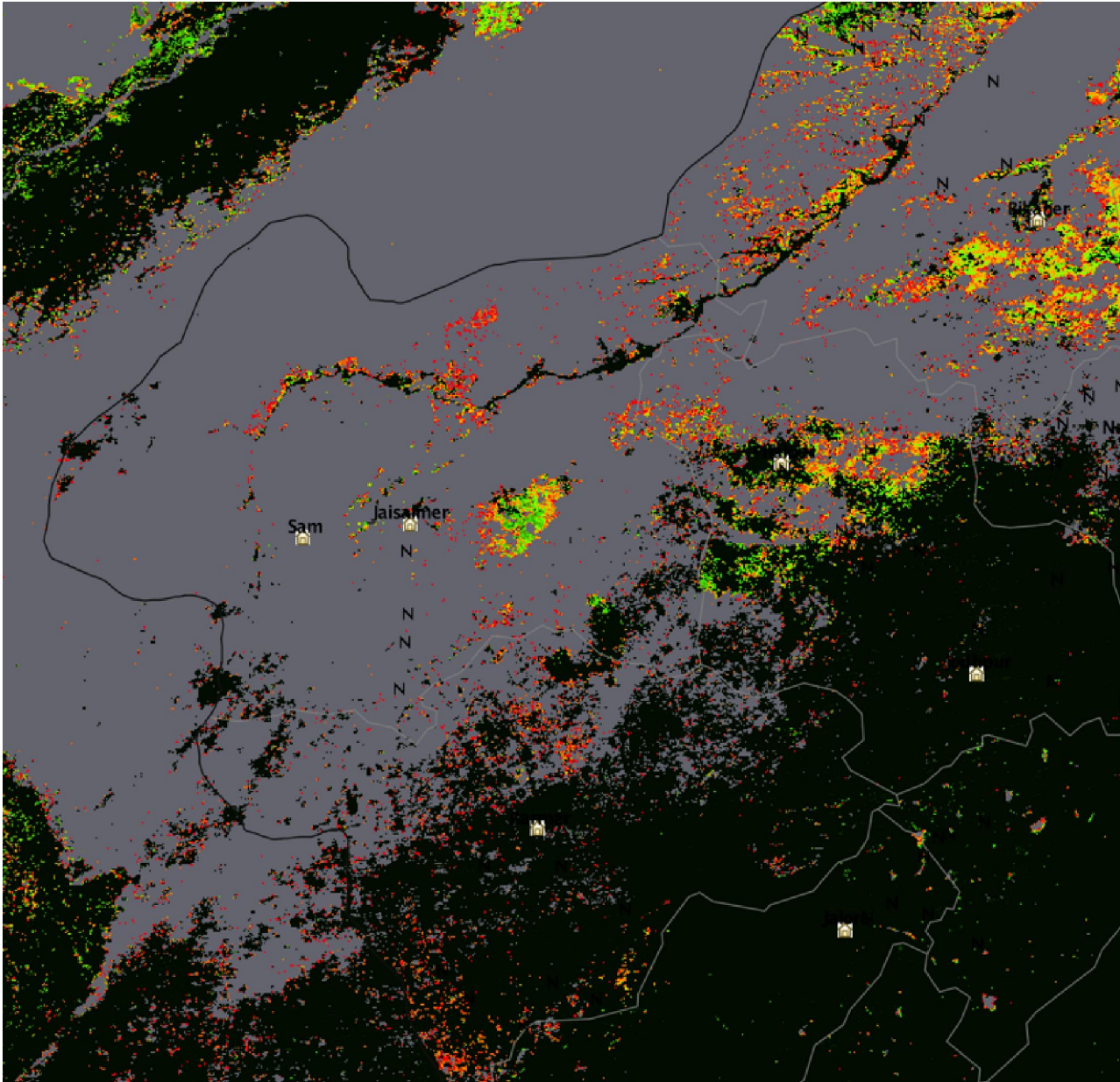
**(Dr. K. L. Gurjar)**  
**Deputy Director (PP)**

**Map showing Locust survey spots during 1<sup>st</sup> fortnight of January 2018**

N means survey were undertaken in that area and no locust activity was observed



Map showing green vegetation status during 1<sup>st</sup> decade of January 2018



Number of decade of vegetations



**Green vegetation observed by the surveyor during 1<sup>st</sup> fortnight of January 2018**

